

Join the Sixth Form that is focused on success



www.madeleyacademy.com



Subjects on offer

Applied Science

Art and Design

Biology

Business

Chemistry

Computer Studies

Construction

Design and Technology

English Language and Literature

English Literature

French

Geography

Health and Social Care

History

Hospitality and Catering

Information Technology

Mathematics

Music

Performing Arts

Physics

Politics

Psychology

Sociology

Spanish

Sport



A Sixth Form focused on success

01952 527700

www.madeleyacademy.com

lholbrook@madeleyacademy.com





Introduction

Madeley Academy operates a highly successful Sixth Form within a school environment. The provision is in the **top 5% of Sixth Forms nationally** and has received outstanding comments from Ofsted in terms of curriculum, standards, careers, personal development and leadership.

Students join the Sixth Form from all over Telford and study a minimum of a 3.5 A Level equivalent. There are a broad range of courses on offer and many students combine both academic A Level courses with the BTEC courses – all these courses now have an examination element.

The Academy has a highly skilled in-house careers provision and all Sixth Formers have a personalised career plan. There are also plenty of enrichment opportunities ranging from the National Citizenship Scheme to extensive volunteering, work experience and a comprehensive Higher Education Week. All students who wish to, have gained university places for the past 9 years and, in 2021, over 50% of students had offers from Russell Group universities which is well above the national average.

The basic entry requirements for Madeley Academy Sixth Form are 6 GCSEs grade 4 or above including English Language and Maths. There are also course-specific requirements which are detailed on the following pages. You can find out more at our Open Evening on **Wednesday 22nd November** and, we will be attending careers events and assemblies across Telford in the Autumn term.

MADELEY ACADEMY YOUR **FUTURE** STARTS HERE

ADMISSIONS NOW OPEN

OPEN EVENING 22ND NOVEMBER | 5:30 - 7:30PM

www.madeleyacademy.com



A Sixth Form focused on success

01952 527700

www.madeleyacademy.com

lhobrook@madeleyacademy.com





Applied Science

BTEC Level 3 National Extended Certificate/Diploma in Applied Science

Why Applied Science?

This course combines all 3 Science disciplines and is assessed through a combination of coursework and exam units (minimum 40%). It is available as a single A level equivalent as well as a double A Level equivalent which allows for specialisation. It prepares students for careers including:

- Nursing
- Mechanical Engineering
- Environmental Chemistry
- Forensic Science
- Paramedic Science
- Criminology
- Electronic Engineering
- Biochemical Science
- Computing

The Science courses are designed to provide academic and vocational experiences. They will prepare students for their choice of career in both the world of work and university courses.

Entry Requirements

- Students must achieve a minimum of 6 GCSEs at Grade 4 or above
- These must include English Language and Mathematics at Grade 4 or above
- 2 x Grade 4 in GCSE Science courses

Course Content

You will complete these three mandatory units plus additional units depending on your pathway:

Unit 1 Principles and Applications of Science (Biology, Chemistry, Physics)

Unit 2 Practical Scientific Techniques

Unit 3 Science Investigation Skills



Art and Design

A Level Art and Design

Why Art and Design?

Art and Design gives you the freedom to express your artistic talents, as you develop your practical skills and the knowledge you will need to progress as an artist, designer or craft person. The course aims to provide a broad approach to Art and Design, where you will be encouraged to use a wide variety of media and materials. It prepares students for careers including:

- Fine Art
- Art Therapy
- Interior Design
- Web Developer
- Architecture
- Graphic Design

If you have a passion for Art and are enthusiastic about this subject and you wish to build upon your previous knowledge and skills, then this course will allow you the opportunity to study Art and Design at University or pursue a successful career in the Arts.

Entry Requirements

- Students must achieve a minimum of 6 GCSEs at Grade 4 or above
- These must include English Language and Mathematics at Grade 4 or above
- Grade 6 in GCSE Art and Design or Merit in BTEC Level 2 Art and Design

Course Content

You will develop your ability to show a range of skills:

- independence of mind in developing your own ideas
- an interest and enthusiasm for Art and Design
- the experience of working with a range of media, including traditional and new media and technologies



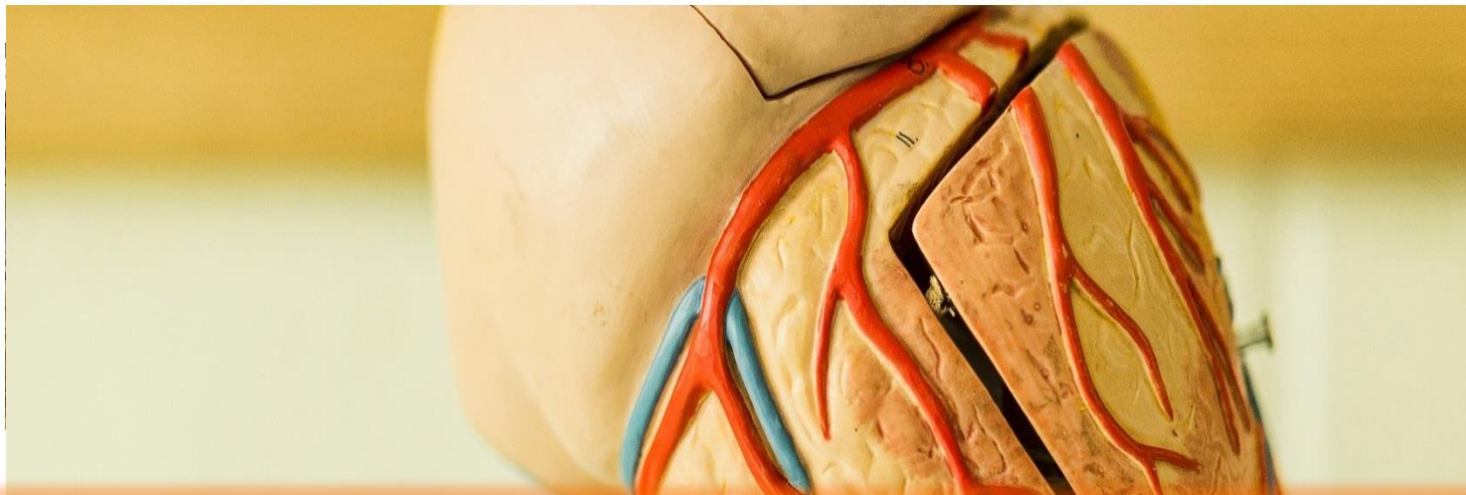
A Sixth Form focused on success

01952 527700

www.madeleyacademy.com

lholbrook@madeleyacademy.com





Biology

A Level Biology

Why Biology?

The opportunities for students of Biology are wide ranging and Science students are include the following fields at university:

- Medicine
- Biological Sciences
- Chemistry
- Nursing
- Veterinary Science
- Pharmacy
- Aeronautics
- Forensic Science
- Physiotherapy

This is a facilitating subject and so underpins many rigorous degree courses and careers in the Sciences.

Entry Requirements

- Students must achieve a minimum of 6 GCSEs at Grade 4 or above
- These must include English Language at Grade 6 and Mathematics at Grade 6
- Students must have Grade 6 in GCSE Biology or GCSE Combined Science

Course Content

You will study six modules of work each covering different key concepts of Biology. Assessment is now all at the end of the two year course and consists of three written exam papers. Practical work is assessed throughout the course providing evidence for a practical endorsement.



Business

A Level Business Studies

Why Business?

Business students are currently preparing to move into Higher Education Courses and careers in the following fields:

- Accountancy
- Business Management
- Finance
- Teaching
- Human Resourcing
- IT/Computing
- International Retail
- Law
- Logistics
- Marketing
- Operations
- Public Relations

The Business course is an exciting insight into relevant business theory and concepts supported by vocational examples. It provides an excellent foundation for a broad range of careers and further study in this field. During sessions we aim to support learning with real business examples and take many free visits to local businesses.

Entry Requirements

Students must achieve a minimum of 6 GCSEs at Grade 4 or above

- These must include English Language at Grade 5 or above and Mathematics at Grade 5
- If studied, then a Grade 6 or Merit in a Business qualification at Key Stage 4

Course Content

You will study three externally assessed Units over two years with all 3 exams at the end:

1. What is Business, Managers, Leadership and Decision Making?
2. Decision Making to Improve Performance
3. Managing Strategic Change



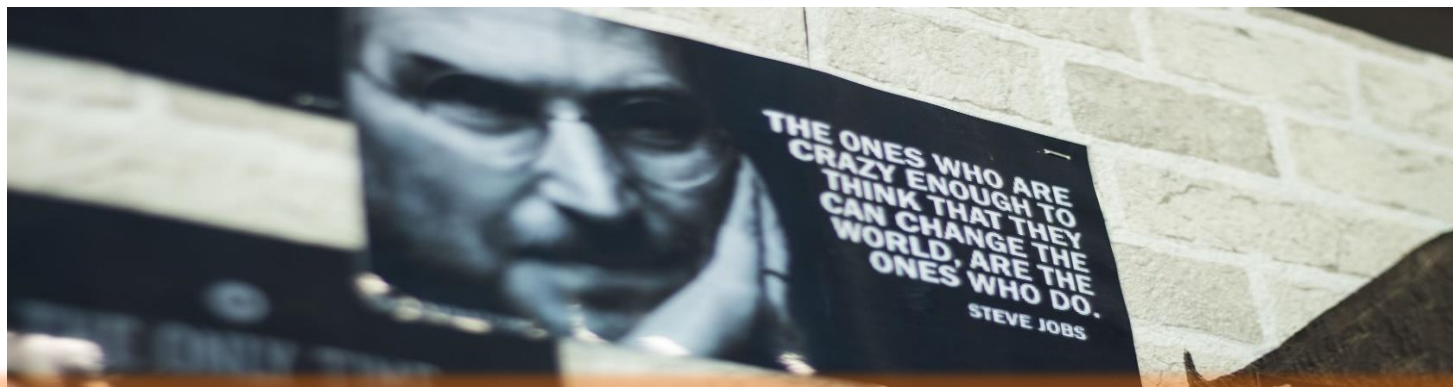
A Sixth Form focused on success

01952 527700

www.madeleyacademy.com

lholbrook@madeleyacademy.com





BTEC Business

BTEC Level 3 National Extended Certificate/Diploma in Business

Why BTEC Business?

The course is offered as both a single and double A Level equivalent allowing students to specialise in the field. It is assessed through a combination of coursework and exam units (60%) and leads to a range of university courses and careers including:

- Accountancy
- Finance
- Teaching
- Human Resourcing
- IT/Computing
- International Retail
- Public Relations
- Marketing
- Operations

The Business course is an exciting insight into relevant business theory and concepts supported by vocational examples. During sessions we aim to support learning with real business examples and take many free visits to local businesses.

Entry Requirements

- Students must achieve a minimum of 6 GCSEs at Grade 4 or above
- These must include English Language and Mathematics at Grade 4 or above
- If studied, then a Grade 4 or Merit in a Business qualification at Key Stage 4

Course Content

- **Extended Certificate** – Exploring Business, Developing a Marketing Campaign, Personal and Business Finance and Recruitment and Selection
- **Diploma** – as above plus Managing an Event, Digital Marketing, International Business and Principles of Management
- Assessment is in the form of external exams, externally assessed coursework and internally assessed coursework.



A Sixth Form **focused on success**

01952 527700

www.madeleyacademy.com

lholbrook@madeleyacademy.com





Chemistry

A Level Chemistry

Why Chemistry?

The course leads to science-based careers and university study in fields such as:

- Aeronautics
- Biological Sciences
- Chemistry
- Electronic Engineering
- Forensic Science
- Chemical Engineering
- Medicine
- Nursing
- Pharmacy

The course is a facilitating subject and combines well with other Sciences and Maths to provide a rigorous foundation for further study.

Entry Requirements

- Students must achieve a minimum of 6 GCSEs at Grade 4 or above
- Grade 6 in GCSE Chemistry or Combined Science
- Grade 6 in GCSE Mathematics and English Language

Course Content

You will study 6 modules of work each covering different key concepts of Chemistry. Assessment is now all at the end of the 2 year course and consists of three written exam papers. Practical work is assessed throughout the course, providing evidence for a Practical Endorsement.



Computer Studies

A Level Computer Studies

Why Computer Studies?

The A level in Computing is varied, interesting and challenging. You need to have a logical mind and be good at Mathematics because computing involves programming which is a logical and sometimes mathematical discipline. It leads to further study at university or careers such as:

- Systems Analysis
- Animation
- Computer Games Production
- Computer Programming
- Computer Technology
- Electronics
- Forensic Computing
- Information Systems
- Music Technology
- Networking
- Software Engineering

Entry Requirements

- Students must achieve a minimum of 6 GCSEs at Grade 4 or above
- Grade 7 in Mathematics and Science
- Satisfactory level of competence in English (minimum Grade 6)
- Grade 7 in Computing or Distinction in ICT

Course Content

During your studies you will cover topics including:

Data Representation, Structure and Management in Information Systems, Data Transmission, Implications of Computer Use, Designing Solutions to Problems, The Structure of Procedural Programs, Data Types and Data Structures, Common Facilities of Procedural Languages, Writing Maintainable Programs, High Level and Low Level Programming and Databases.



Construction

BTEC Level 3 National Subsidiary Diploma in Construction

Why Construction?

Students who wish to take this course should have an interest in Construction and the Built Environment. The course has a specialist work-related focus and covers the key knowledge and practical skills required in the appropriate vocational sector. This course is equivalent to one A Level and can lead to university study or employment in fields such as:

- Architecture
- Contracting Operations
- Building Services Engineering
- Surveying
- Quantity Surveying
- Town Planning
- Civil Engineering
- Site Supervision
- Structural Engineers

Entry Requirements

- Students must achieve a minimum of 6 GCSEs at Grade 4 or above
- These must include English Language and Mathematics at Grade 4 or above
- Merit Grade in Level 2 Construction or Grade 4 in a Technology subject

Course Content

The course consists of internally assessed units, externally assessed units and an exam.

Units covered are:

- Construction Design
- Construction Principles
- Construction Technology
- Health and Safety in Construction



Design and Technology

A Level Design and Technology

Why Design and Technology?

This subject will provide you with opportunities to develop your practical skills, knowledge and understanding of the way products are designed, made and manufactured. The subject requires initiative, creativity, determination but, most importantly, the desire to develop even better solutions to meet the needs of customers. It leads to university study and employment such as:

- Engineering
- Architecture
- Teaching
- Manufacturing
- Product Design
- Ergonomics
- Urban Planning
- Management
- ICT (CAD/CAM)

Entry Requirements

- Students must achieve a minimum of 6 GCSEs at Grade 4 or above
- Grade 6 or above in GCSE Design and Technology: Product Design, Resistant Materials or Graphic Products, Electronic Products and Systems and Controls
- Mathematics and English Language at Grade 6

Course Content

You will study four Units as follows:

- Materials, Components and Applications
- Learning Through Designing and Making
- Design and Manufacture – Examination
- Design and Making Practice

The course is assessed through a coursework project and exam.



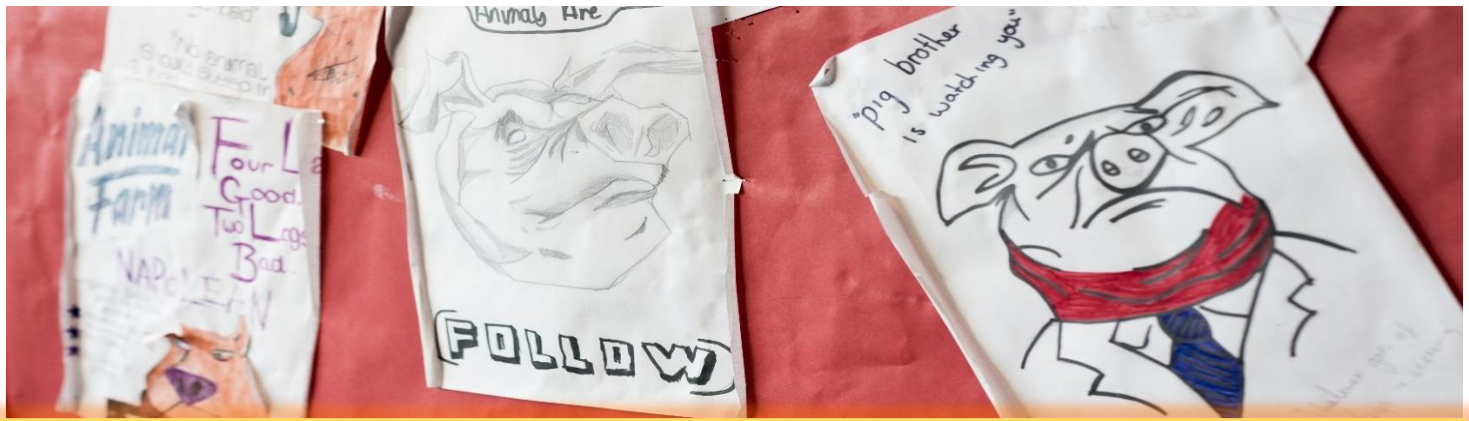
A Sixth Form focused on success

01952 527700

www.madeleyacademy.com

lholbrook@madeleyacademy.com





English Language and Literature

A Level English Language and Literature

Why English Language and Literature?

A Level English Language and Literature (EMC) presents clear continuity from GCSE English and GCSE English Literature with the study of literary and non-fiction written and spoken texts. The course also enables students to develop their creativity and expertise by producing their own original writing. Qualifications in English Language and Literature are acceptable as an entry to many different careers, which may include:

- Business
- Teaching
- Health careers
- Journalism
- Leisure
- Marketing
- Performing Arts
- Media
- Tourism

Entry Requirements

- Students must achieve a minimum of 6 GCSEs at Grade 4 or above
- Grade 6 or above in English Language and English Literature

Course Content

Component 1 – Exploring non-fiction and spoken texts (1-hour exam – 16%)

Component 2 – The language of poetry and plays (2-hour exam – 32%)

Component 3 – Reading as a writer, writing as a reader (2-hour exam – 32%)

Component 4 – Independent study: analysing and producing texts (3000 word coursework – 20%)



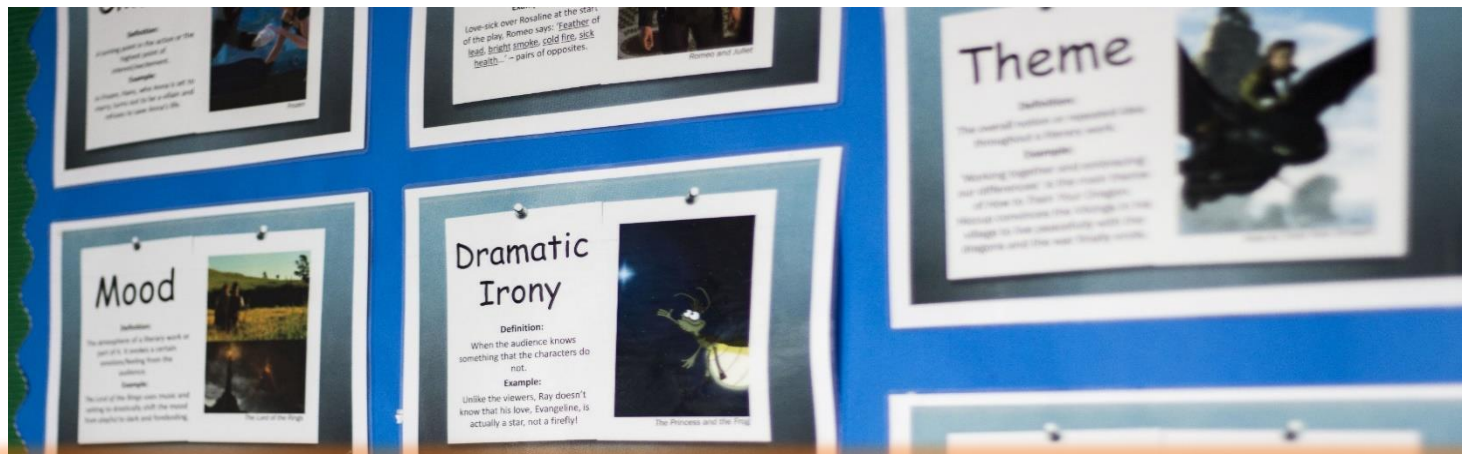
A Sixth Form focused on success

01952 527700

www.madeleyacademy.com

lholbrook@madeleyacademy.com





English Literature

A Level English Literature

Why English Literature?

English Literature is designed to encourage wider reading and advanced, detailed research within a whole field of literary studies. Students will build on their GCSE studies to analyse and compare a range of literary texts. This is a facilitating subject and complements many other subjects, leading to careers and university studies such as:

- Law
- Teaching
- Health careers
- Journalism
- Business
- Criminology
- Performing Arts
- Media
- Creative Writing

Entry Requirements

- Students must achieve a minimum of 6 GCSEs at Grade 4 or above
- Grade 6 or above in English Literature
- English Language at a minimum of Grade 5

Course Content

Component 1 - Drama and Poetry Pre-1900 – Shakespeare, drama and poetry pre-1900 (2 hours 30 minutes exam- 40%)

Component 2 - Comparative and contextual study – American Literature 1880 -1940, The Gothic, Dystopia, Women in Literature, The Immigrant Experience (2 hours 30 minutes exam- 40%)

Component 3 - Literature Post 1900 (3000 word coursework -20%)



A Sixth Form focused on success

01952 527700

www.madeleyacademy.com

lhobrook@madeleyacademy.com





French

A Level French

Why French?

French is one of the most widely spoken languages and provides students with invaluable travel and work opportunities. At A Level students will develop the range and complexity of their language and use this to discuss issues, present ideas and develop comprehension skills. At A Level, students are provided with the opportunity to further their appreciation of the language, literature, film and culture of the French-speaking world. Languages can lead to careers in:

- Diplomatic Services
- Journalism/Media
- Education
- Business and Trade
- Law
- Engineering
- Marketing and Advertising
- Travel and Tourism
- Logistics and Distribution

Entry Requirements

- Students must achieve a minimum of 6 GCSEs at Grade 4 or above
- Grade 5 or above in English Language and Mathematics, and Grade 7 in French GCSE

Course Content

Year 1:

- La famille, L'éducation, Le travail
- La culture politique et artistique: La musique, Les médias, Les traditions
- Study of a film

Year 2:

- L'immigration et la société multiculturelle française et l'extrême droite
- Occupation et la Résistance; La France occupée; Le régime de Vichy
- Study of a novel: Sac de Billes



Geography

A Level Geography

Why Geography?

The A Level course focuses on the complex inter-relationships between human and physical environments and the opportunities, problems and questions that arise as a result. Geographers develop enquiry, decision making, fieldwork and research skills, which will prepare them well for Higher Education courses and a wide range of career choices such as:

- Geography
- Teaching
- Geology
- Environmental Science
- Business
- Criminology
- Urban Planning
- Media
- Meteorology

Entry Requirements

- Students must achieve a minimum of 6 GCSEs at Grade 4 or above
- Grade 6 or above in English Language, Mathematics and Geography

Course Content

Component 1: Physical Geography

Water and Carbon Cycles, Coastal Systems and Landscapes, Hazards

Assessed by written examination (40% of total A Level)

Component 2: Human Geography

Global systems and Global Governance, Changing Places, Contemporary Urban Environments

Assessed by written examination (40% of total A Level)

Component 3: Geography Fieldwork Investigation

Fieldwork and Data Gathering, Production of a Scientific Report of 3000-4000 words.

Assessed by teachers and moderated by examination board (20% of total A Level)



A Sixth Form focused on success

01952 527700

www.madeleyacademy.com

lhobrook@madeleyacademy.com





Why Health and Social Care?

- Nursing
- Midwifery
- Counselling
- Social Work
- Paramedic Science
- Play Therapy
- Teaching
- Community Work
- Care Work

- Students must achieve a minimum of 6 GCSEs at Grade 4 or above
- These must include English Language and Mathematics at Grade 4 or above
- If studied, then a Grade 4 or Merit in a related qualification at Key Stage 4

Unit 1	Human Lifespan Development (External exam)
Unit 5	Meeting individual care and support needs (Internal assignment)
Unit 12	Supporting individuals with additional needs (Internal assignment)

Unit 4	Enquiries into Current Research in Health and Social Care (External controlled assessment)
Unit 6	Work experience in Health and Social Care (Internal assignment with work placement)
Unit 7	Principles of Safe Practice in Health and Social Care (Internal assignment)
Unit 8	Promoting Public Health



01952 527700





Hospitality and Catering

BTEC Level 3 National Subsidiary Diploma in Hospitality and Catering

Why Hospitality and Catering?

Hospitality and Catering gives students hands-on experience as well as a broad theoretical understanding of the hospitality industry. The unique nature of the course allows youngsters to develop their practical skills in areas of food preparation and cooking, food and drink service, customer service and recognise the value and importance of team work. It also provides students with the experience of hands on supervision at a range of events and leads to careers such as:

- Armed Forces
- Education Human
- Event Catering
- Hotel Management
- Industrial Catering
- License Retail Management
- Marketing
- Resources
- Tourism

Entry Requirements

- Students must achieve a minimum of 6 GCSEs at Grade 4 or above
- These must include English Language and Mathematics at Grade 4 or above
- If studied, then a Grade 4 or Merit in a related qualification at Key Stage 4

Course Content

Mandatory units include: The Hospitality Industry, Principles of Customer Service Supervision, Providing Customer Service

Optional units include: European Food, Asian Food, Alcoholic Beverage Service and Planning and Managing a Hospitality Event.



A Sixth Form focused on success

01952 527700

www.madeleyacademy.com

lhobbrook@madeleyacademy.com





History

A Level History

Why History?

A good historical education is essential to understand your world! Employers and universities know that students of History have developed a number of skills that can be applied to any situation. Studying History shows that you are able to gather information from a range of sources, that you understand different points of view and can detect bias and propaganda and reach a balanced judgement based on reliable evidence. History is a facilitating subject that develops your transferable skills which can be used in a wide range of interesting, stimulating and challenging careers such as:

- Law
- Archaeology
- Historian
- Journalism/Media
- Teaching
- Marketing
- Police
- Research
- Business Management

Entry Requirements

- Students must achieve a minimum of 6 GCSEs at Grade 4 or above
- Grade 6 or above in GCSE English Language and History

Course Content

You will study 4 units as follows:

- British period study and enquiry: England 1547-1603 the Later Tudors
- Non-British period study: The Cold War in Europe 1941-1995
- Thematic study and interpretations: Russia and its Rulers 1855-1964
- Topic based essay: A 3,500-to-4,000 word essay based on a topic of the student's choice



Information Technology

BTEC Level 3 National Extended Certificate/Diploma in Information Technology

Why Information Technology?

With elements such as spreadsheet modelling, information technology systems and website developments there are very few careers that do not require one or more of these skills. IT is a fast moving area and, as such, needs to attract people to it that are fast moving and dynamic.

A course in IT will open doors in both an academic or career based pathway. All areas of employment demand every-increasing IT skills, a qualification that is both skill and theory based can offer the foundation for further study at University or careers in areas such as:

- Business Admin
- E-Commerce
- Game Design
- Marketing
- Programming
- Software Engineering
- Telecommunications
- Web Admin
- Web Development

Entry Requirements

- Students must achieve a minimum of 6 GCSEs at Grade 4 or above
- These must include English Language and Mathematics at Grade 4 or above
- If studied, then a Grade 4 or Merit in a related qualification at Key Stage 4

Course Content

Extended Certificate: 3 mandatory units (1 written exam) plus 1 optional unit

Diploma: 4 mandatory units (1 written exam) plus 2 optional units.

Mandatory Units: Information Technology Systems (Written Exam), Creating Systems to Manage Information.

Optional Units: Using Social Media in Business, Programming, Data Modelling, Website Development and Computer Games Development.



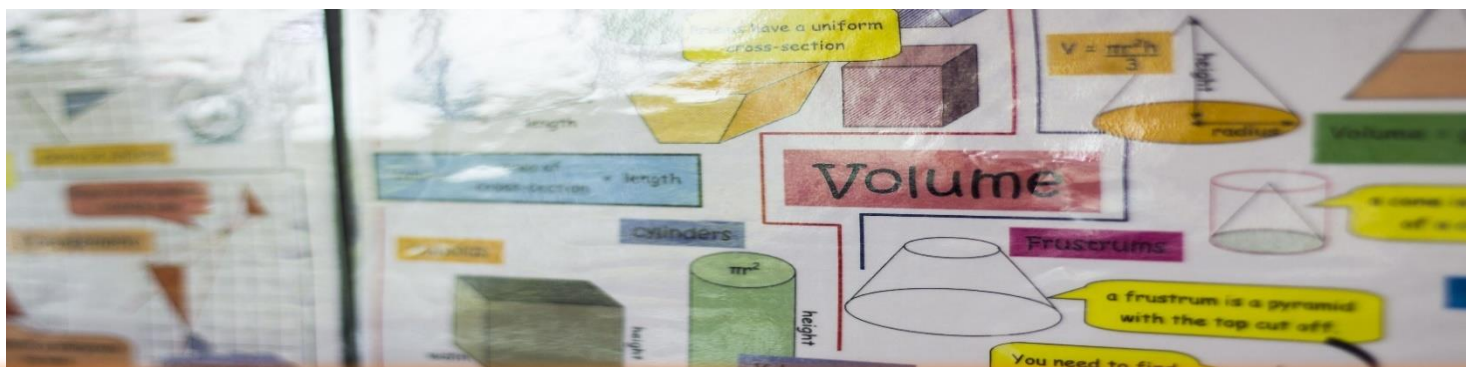
A Sixth Form **focused on success**

01952 527700

www.madeleyacademy.com

lholbrook@madeleyacademy.com





Mathematics

A Level Mathematics

Why Mathematics?

The opportunities for students of Mathematics are vast and it complements and supports other courses, for example: Physics, Chemistry, Design Technology and Business Studies. Maths is a facilitating subject and support is available for the most able Mathematicians to sit the Advanced Extension Award in Mathematics and/or Step Papers as part of their offers for universities. Mathematics leads onto many careers and university pathways such as:

- Accountancy
- Economics
- Teaching
- Engineering
- Bio-Chemistry
- Quantity Surveying
- Police
- Medicine
- Business Management

Entry Requirements

- Students must achieve a minimum of 6 GCSEs at Grade 4 or above including English Language
- Grade 6 or above in GCSE Mathematics and Science

Course Content

All students will study:

Pure Maths - including geometry, numerical methods, calculus and trigonometry

Statistics - including large data sets, Normal and Binomial Distributions and Hypothesis testing

Mechanics - including projectiles and Newton's Laws with contextual problem solving being a main focus in all studies.



A Sixth Form focused on success

01952 527700

www.madeleyacademy.com

lholbrook@madeleyacademy.com





Music

A Level Music

Why Music?

Students on this course will develop and extend their technical and performance skills on their chosen instrument through performance; unleash their imagination in composition and technical studies, and broaden their knowledge and understanding of a wide range of musical styles and sounds in appraising.

Entry Requirements

- Students must achieve a minimum of 6 GCSEs Grade 4 or above including English Language and Mathematics at Grade 6 or above
- At least one GCSE/BTEC Level 2 qualification in Music Grade 6/Merit or above
- Additional experience in Graded Music and Music Theory exams is desirable

Course Content

Component 1: Performing (30%)

Extended Performance. All students are required to submit an 8-10 minute recording which may comprise solos and/or ensemble performances. The performances are recorded with a small audience present. It is recommended that students perform at Grade 7 standard or higher for this unit.

Component 2: Composing and Technical Studies (30%)

Students will complete two compositions resulting in a minimum submission of six minutes of music. One of these compositions can be a free composition or a composition in response to a brief set by the examination board. The other composition will assess composition technique skills developed throughout the course

Component 3: Appraising (40%)

Assessment is through a two-hour examination paper comprising three sections. Students will be assessed on their aural analysis skills and their understanding of set works, analysing works from a written score.



A Sixth Form focused on success

01952 527700

www.madeleyacademy.com

lholbrook@madeleyacademy.com





Performing Arts

BTEC Level 3 Extended Certificate/Diploma in Performing Arts

Why Performing Arts?

For those with a love of performance, the Performing Arts course is designed to develop student's specialist and more general skills within the Performing Arts disciplines. Through practical exploration and performance work, students will develop and strengthen essential technical and performance skills. This exciting and varied course is designed to build attributes sought by Universities and has a strong track record of students progressing onto top Performing Arts Schools and universities. Students will develop both their performance skills and transferrable skills such as independence, team work, leadership and management, self-discipline, communication and self-confidence. The course is demanding in terms of practice time and extracurricular opportunities. The course is available as a single or double course thus allowing students to specialise.

Entry Requirements

- Students must achieve a minimum of 6 GCSEs at Grade 4 or above including English Language and Mathematics
- At least one GCSE/BTEC Level 2 qualification in a Performing Arts subject Grade 4 or Merit
- Additional experience in Performing Arts either within the Academy, or through an outside agency (such as a dance or theatre school) would be desirable

Course Content

- **BTEC Level 3 National Extended Certificate in Performing Arts** (equivalent of 1 A Level)
Mandatory units: Investigating Practitioners Work, Developing Skills and Techniques for Live Performance, Group Performance Workshop
- **BTEC Level 3 National Diploma in Performing Arts** (equivalent of 2 A Levels)
- **Mandatory units:** Investigating Practitioners Work, Developing Skills and Techniques for Live Performance, Group Performance Workshop, Performing Arts in the Community, Individual Performance Commission, Final Live Performance to an Audience.



Physics

A Level Physics

Why Physics?

The opportunities for students of Physics, on completion of full-time education, are varied. There are many possible careers within the scientific world and qualifications in Science subjects are acceptable as an entry into many other careers. Physics should be studied in conjunction with Maths. Physics students are currently preparing to move into Higher Education courses and careers in the following fields:

- Aeronautics
- Computing
- Electronic Engineering
- Forensic Science
- Mechanical Engineering
- Medicine
- Nursing
- Pharmacy
- Research Chemistry

Entry Requirements

- Students must achieve a minimum of 6 GCSEs at Grade 4 or above including English Language
- Grade 6 or above in GCSE Mathematics and English Language Grade 6 or above in GCSE Physics or Combined Science

Course Content

You will study 6 modules of work each covering different key concepts of Physics such as DC circuit and wave/particle theory.

Assessment is at the end of the two year course and consists of three written exam papers. Practical work is assessed throughout the course, providing evidence for a Practical Endorsement.



Politics

A Level Politics

Why Politics?

Understanding politics and how the government works is vital in a modern world where democracy and democratic values are being challenged in all corners of the world. The rise of populism and support for 'strong' leaders often leads to large swathes of people abandoning democratic values or supporting more extreme and radical ideas. Even a cursory understanding of current affairs illustrates this well.

Entry Requirements

- Students must achieve a minimum of 6 GCSEs Grade 4 or above including English Language and Mathematics at Grade 6 or above
- Grade 6 in a Humanities subject (History or Geography) and English Literature

Course Content

UK Politics and Government, Political Participation - students will study:

- Democracy and participation, political parties, electoral systems, voting behaviour and the media
- UK Government -students will study: the constitution, parliament, Prime Minister and executive, relationships between the branches

US Government and Politics and Comparative Politics - For Comparative USA - students will study:

- US Constitution and federalism, US Congress, US presidency, US Supreme Court and civil rights, democracy and participation, comparative theories

Political Ideas - Core Political Ideas - students will study:

- Conservatism, liberalism and socialism

Non-core Political Ideas - students will study:

- One idea from the following: anarchism, ecology, feminism, multiculturalism, nationalism



Psychology

A Level Psychology

Why Psychology?

The opportunities for students of Psychology, when they have completed a degree programme are enormous and a wide range of career choices are available:

- Clinical Psychology
- Educational Psychology
- Occupational Psychology
- Counselling
- Forensics (Criminal and Legal)
- Sports Psychology

The course enables students to acquire a basis for further study and employment. It aims to encourage an experimental approach to Psychology linked to theoretical developments and to give an understanding of the methodologies of Science. Students are expected to develop the ability to collect, present and interpret experimental and empirical data. It is also useful in other areas not directly concerned with psychology: Management, Personnel, Teaching and Public Service.

Entry Requirements

- Students must achieve a minimum of 6 GCSEs at Grade 4 or above including:-
- Grade 6 or above in GCSE Mathematics, English Language and Science

Course Content

Year 1:

Social Influence, Memory,
Attachment and Psychopathology

Year 2:

Gender, Schizophrenia,
Forensics and Key Debates

Across both years you will study research methods, the key approaches and bio-psychology.



A Sixth Form focused on success

01952 527700

www.madeleyacademy.com

lhobrook@madeleyacademy.com





Sociology

A Level Sociology

Why Sociology?

Sociology is the study of society and involves looking at topics such as the class structure of modern societies, the family, religion and crime and deviance. You will build up a skill set that will allow you to analyse, assess and evaluate key theories ranging from Marxism to Postmodernism and you will soon start to develop a sociological imagination.

Sociology leads to a wide range of careers such as:

- Social Work
- Government Research
- Human Resources
- The Police Force
- Journalism
- Counselling
- Criminology
- Teaching

Entry Requirements

- Students must achieve a minimum of 6 GCSEs at Grade 4 or above including Mathematics and English Language at a minimum of a Grade 5

Course Content

Across the full A-Level course, the core themes of socialisation, culture and identity will all feature heavily. **Across both years you will study the key topics of social theory and research methods.** In both Year 1 and 2, key topics of social theory and research methods will also be assessed. The first year is divided into two core units of **The Family and Education**. The second year requires you to study **The Media and Crime and Deviance**. You will be applying the key issue of power and social differentiations to these core topics.



Spanish

A Level Spanish

Why Spanish?

Spanish is one of the most widely spoken languages and provides students with invaluable travel and work opportunities. At A Level students will develop the range and complexity of their language and use this to discuss issues, present ideas and develop comprehension skills. At A Level, students are provided with the opportunity to further their appreciation of the language, literature, film and culture of the Spanish-speaking world. Languages can lead to careers in:

- Diplomatic Services
- Journalism/Media
- Education
- Business and Trade
- Law
- Engineering
- Marketing and Advertising
- Travel and Tourism
- Logistics and Distribution

Entry Requirements

- Students must achieve a minimum of 6 GCSEs at Grade 4 or above
- Grade 5 or above in English Language and Mathematics and a Grade 7 in Spanish GCSE

Course Content

Year 1

- La estructura familiar, el mundo laboral y el turismo
- La cultura La cultura en el mundo de habla española: la música, los medios de comunicación, las fiestas y tradiciones.
- Study of a film; El laberinto del fauno

Year 2

- La inmigración y la sociedad multicultural española
- La dictadura franquista y la transición a la democracia
- Study of a novel



Sport

BTEC Level 3 National Extended Certificate in Sport

BTEC Level 3 National Diploma in Sport and Exercise Science

Why Sport?

These courses offer an active and enjoyable way to study Sport and to gain an understanding of the Sport and Leisure Industry. Both courses aim to provide students with opportunities to progress academically and to gain the necessary prerequisites to pursue a successful career within the broad field of Sport. There are various possibilities open to students as they progress through the Academy, including: entrance to University to study sport related degrees, direct employment in the leisure industry, achieve a career in a particular sport, either as a full time professional or semi-professional. The Sports Academy aims to provide students with the opportunities to play competitive fixtures at all levels, including prestigious competitions such as ESFA National Cups and League Competitions as well as gaining coaching, first aid and leadership qualifications. Possible pathways include:

- Sports Coaching
- Sports Science
- Leisure Management
- Teaching
- Sports and Exercise Science
- Strength and Conditioning

Entry Requirements

- Students must achieve a minimum of 6 GCSEs at Grade 4 or above including English Language and Mathematics
- If studied, then a Grade 4 or Merit in a related qualification at Key Stage 4
- A high commitment to PE and Sport, including extra-curricular activities

Course Content

- Example units include: **Mandatory Units:** Anatomy and Physiology (external assessment), Fitness Training and Programming for Health, Sport and Well-being (external assessment), Professional Development in the Sports Industry.
- **Example Optional Units:** Sports Leadership, Application of Fitness Testing, Sports Psychology, Practical Sports Performance.



A Sixth Form focused on success

01952 527700

www.madeleyacademy.com

lhobrook@madeleyacademy.com



Apply now and
secure your next
step to success

Contact us

Madeley Academy

Castlefields Way, Madeley, Telford, Shropshire, TF7 5FB



01952 527700



lholbrook@madeleyacademy.com



www.madeleyacademy.com